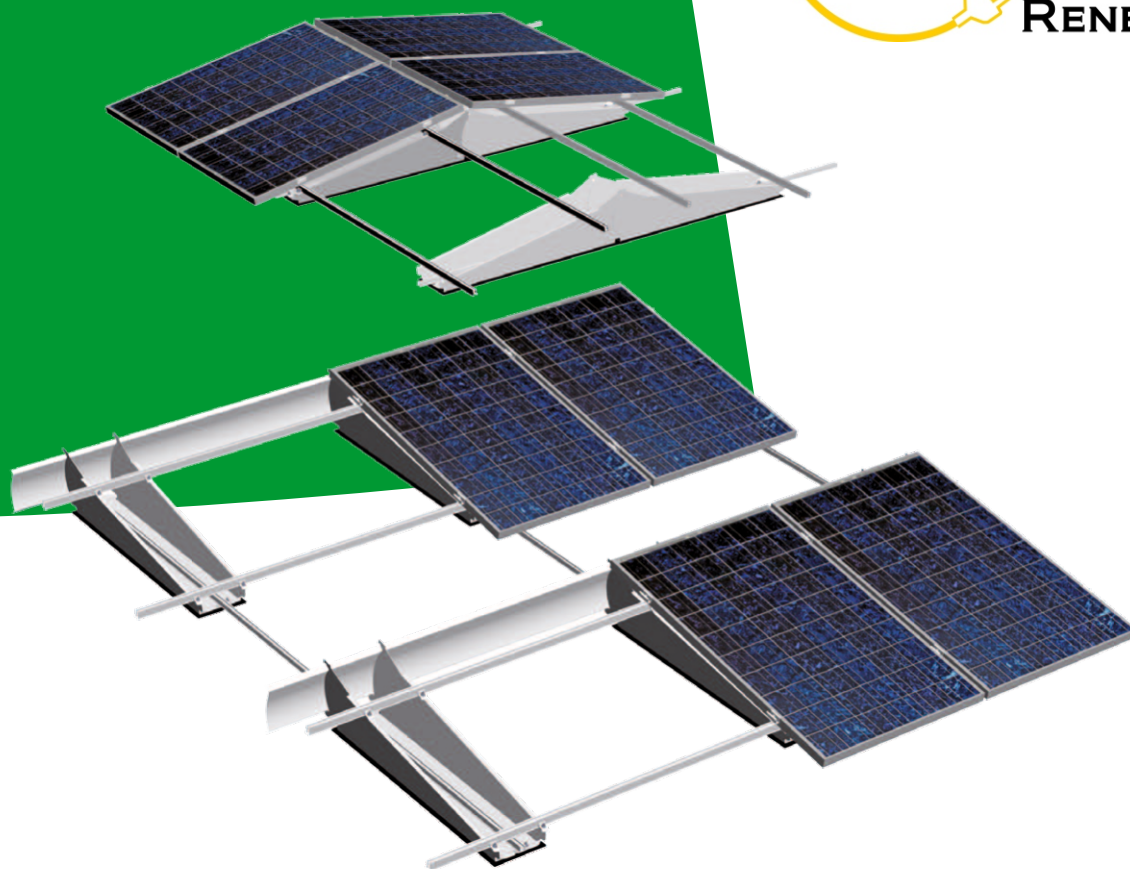


Flat Roof Racking System TRIC F box



TRIC F box is a mounting system for all common industrial flat roofs. The lightweight design extends the possible photovoltaic installation. Optimal roof utilization and very fast assembly maximize the economic efficiency.



STANDOUTS

- Very fast installation
- Lightweight design
- Optimal roof utilization
- Flexible orientation

DETAILS

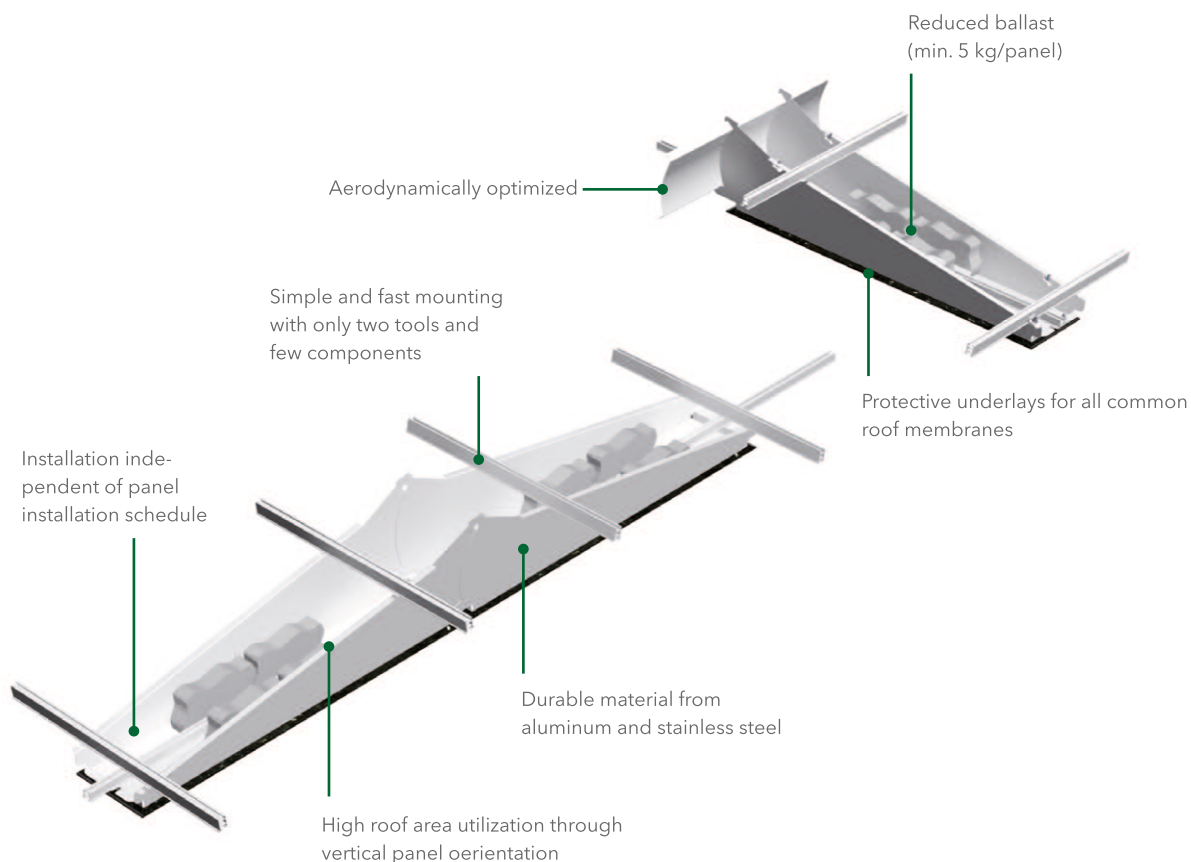
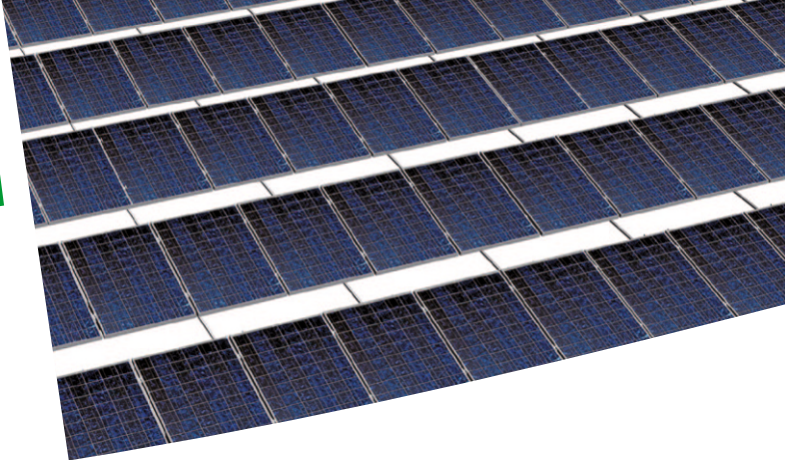
Intelligent mounting system with very few components that can be installed in simple steps using only two tools. Saves at least 50% time. Can be installed independently of the panel installation schedule.

Aerodynamically optimized and wind tunnel tested system components significantly reduce the weight (approx. 20 kg/kWp). Consequently the structural roof load is reduced by approx. 12 kg/m².

The vertical panel orientation and their gently inclined pitch of only 10° allow to utilize up to 95% of the roof area for east-west and up to 65% for southern orientation!

Choice of either southern or east west panel orientation with a single system. Suitable for all common industrial roofs in combination with suitable protective underlays.

Flat Roof Racking System TRIC F box



Technical Data	TRIC F box
Application	Industrial flat roofs with little excess load tolerance and roof penetration impossible/undesirable
Panel orientation	Southern or east/west; pitch 10°; vertical; for practically all common framed panels
Ballast	Normal roof zone min. 5 kg/panel; corner-/edge zones min. 20 kg/panel
Structural roof load	Min. 12 kg/m ²
Material	Aluminum and stainless steel

Wagner Renewables Ltd
Unit 1B, Keynor Farm, Sidlesham, Chichester, West Sussex, PO20 7LL Tel: 01243 641830 Email: info@wagner-renewables.com

01243 641830 info@wagner-renewables.com