



english version



IRFTS<sup>®</sup>  
SOLAR SOLUTIONS

# EASY ROOF INDUSTRIAL

IN ROOF MOUNTING SYSTEM FOR ROOF WITH PURLINS



PRODUCT



ADVANTAGES

COMPATIBLE  
WITH 60 CELLS - 6"  
MODULES

INDUSTRIAL  
ROOF SOLUTION

CONSTRUCTION  
MADE OF WOOD,  
METAL, CONCRETE

PITCH  
FROM 8° TO 40°

NO CUTS  
NO SEAL

PORTRAIT  
OR  
LANDSCAPE

KNOW  
MORE :



ASSEMBLY  
INSTRUCTION :



**EASY ROOF INDUSTRIAL** is now able to offer a solution to meet the specific characteristics of most types of roofing, Portrait or Landscape found amongst **industrial and agricultural buildings** with fixing on metallic and wooden purlins.

You will be able to integrate **quickly and easily** in Portrait / Landscape style, the great majority of PV panels available on the market thanks to its all- purpose components.

**All components are standard** to help you to face any unforeseeable events on a building site !  
(i.e. : lay-out modification)

Save time and money thanks to its inventive process of splint bar with no cuts and no seals.

CONTACT :  
IRFTS

26, rue du 35<sup>ème</sup>  
Régiment d'Aviation  
69500 BRON  
(FRANCE)

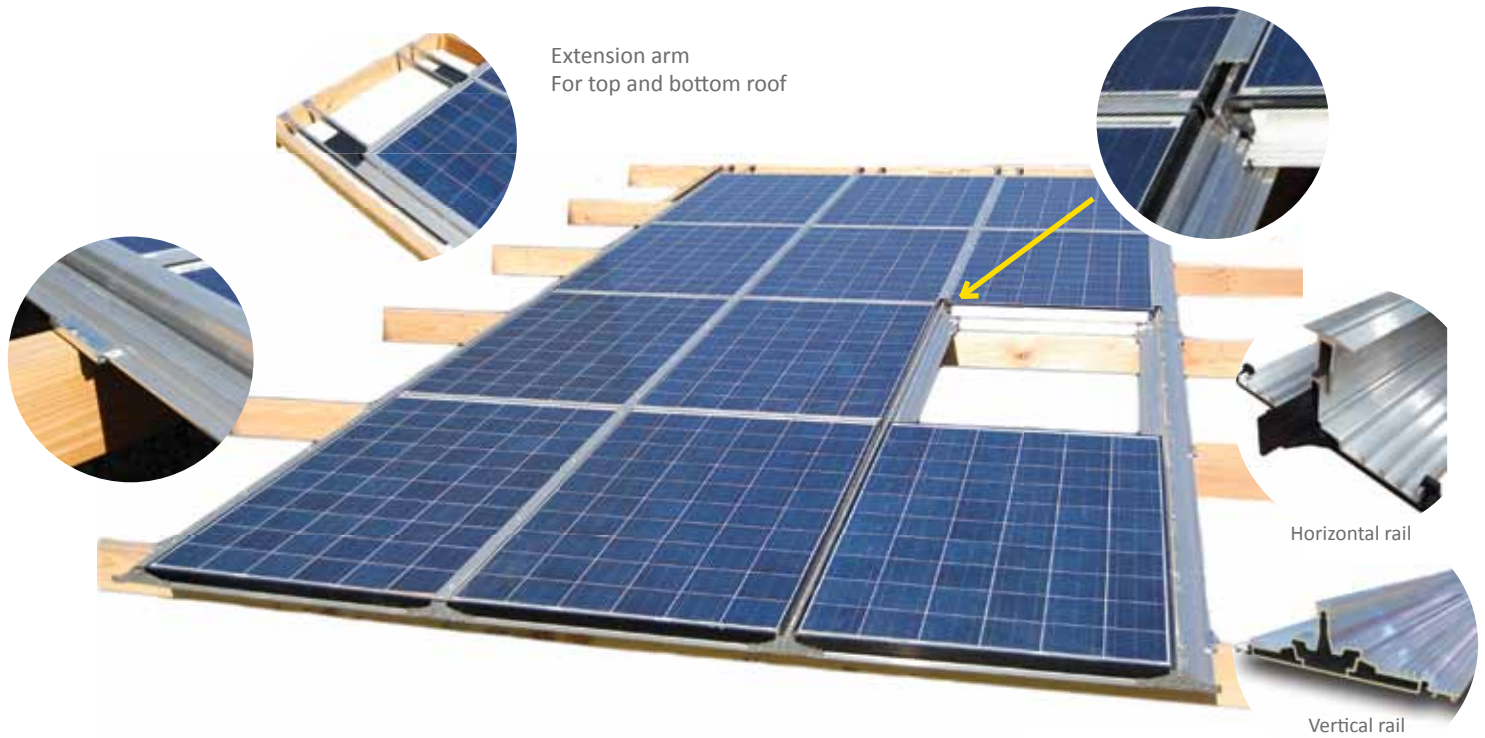
+ 33 (0)4 78 38 83 10

info@irfts.com

[www.irfts.com](http://www.irfts.com)

# EASY ROOF INDUSTRIAL

IN ROOF MOUNTING SYSTEM FOR ROOF WITH PURLINS



## TECHNICAL CHARACTERISTICS AND ADVANTAGES

<b>Versatility</b>	<ul style="list-style-type: none"> <li>• Compatible with all types of roof construction : wood, metal, concrete</li> <li>• Maximum distance between purlins: 1.6m</li> <li>• Extension arm to reach the next purlin</li> <li>• All designs and layouts: Complete or part roof systems, any position on the roof</li> <li>• Solution for roofs with slopes between 8 and 40 degrees</li> </ul>
<b>Simplicity and time saving</b>	<ul style="list-style-type: none"> <li>• Adjustable assembly up to MW without cut on site</li> <li>• A clever splint system ease the assembly for a perfect mechanical strength</li> <li>• Minimal amounts of parts are required for the assembly of the structure</li> </ul>
<b>Storage/ Distribution</b>	<ul style="list-style-type: none"> <li>• Parts are universal for all size modules and all fields PV configurations</li> </ul>
<b>Reliability</b>	<ul style="list-style-type: none"> <li>• Integrated system with no seals</li> <li>• Aluminium fixings and stainless steel fastenings to provide an ultimate resistance to extreme weather conditions</li> </ul>
<b>Design</b>	<ul style="list-style-type: none"> <li>• Integrated system to provide a seamless and visually stunning installation</li> <li>• Available in mill aluminium or black finish</li> </ul>
<b>Performance</b>	<ul style="list-style-type: none"> <li>• Fully ventilated concept to optimise the energy efficiency of the installation</li> </ul>
<b>Tests and standards</b>	<ul style="list-style-type: none"> <li>• 1200 joules resistance</li> <li>• UV, hailstone, corrosion, heat, snow and wind (Snow load up to 3800 Pa for max 1000 m altitude)</li> </ul>
<b>Certifications</b>	<ul style="list-style-type: none"> <li>• <i>New Technical Investigation certification (in progress)</i></li> <li>• <i>Pass' Innovation (in progress)</i></li> <li>• 10 year manufacturer warranty</li> </ul>
<b>Compatibility</b>	<ul style="list-style-type: none"> <li>• 60 cells 6'' framed PV module<sup>(1)</sup></li> </ul>
<b>Formats</b>	<ul style="list-style-type: none"> <li>• Portrait or Landscape</li> </ul>

<sup>(1)</sup> To know more, please consult compatibility document «EASY ROOF INDUSTRIAL» available on : [www.irfts.com](http://www.irfts.com)

MEMBER OF :



Your nearest contact :



[www.irfts.com](http://www.irfts.com)