

# WiFi Configuration Via Laptop/Pad

## 1. Preparation

- 1.1 Power Wi-Fi inverter (or EzLogger WiFi) on.
- 1.2 If you are configuring Wi-Fi inverter, make sure the yellow led on front cover is blinking. Otherwise please set the protocol to Wi-Fi according to user manual of inverter at first.
- 1.3 Power Wi-Fi router on.
- 1.4 Switch on the Wi-Fi of laptop.



## 2. Connect WiFi to 'Solar-WiFi'

(password:12345678)

2.1 Search WiFi network and connect 'Solar-WiFi'

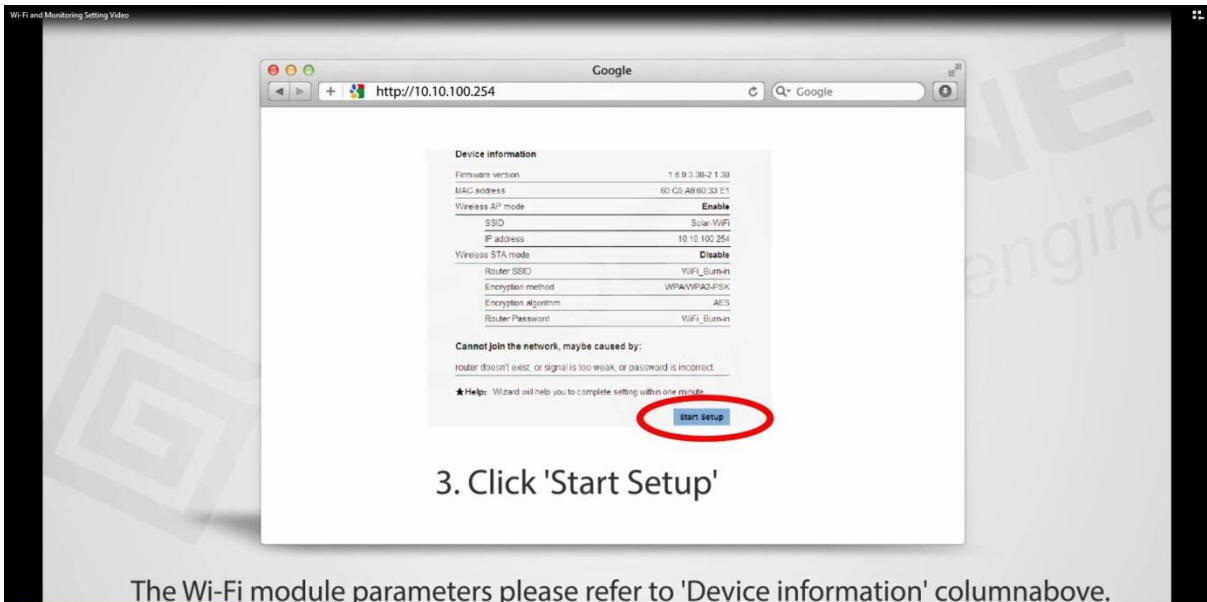
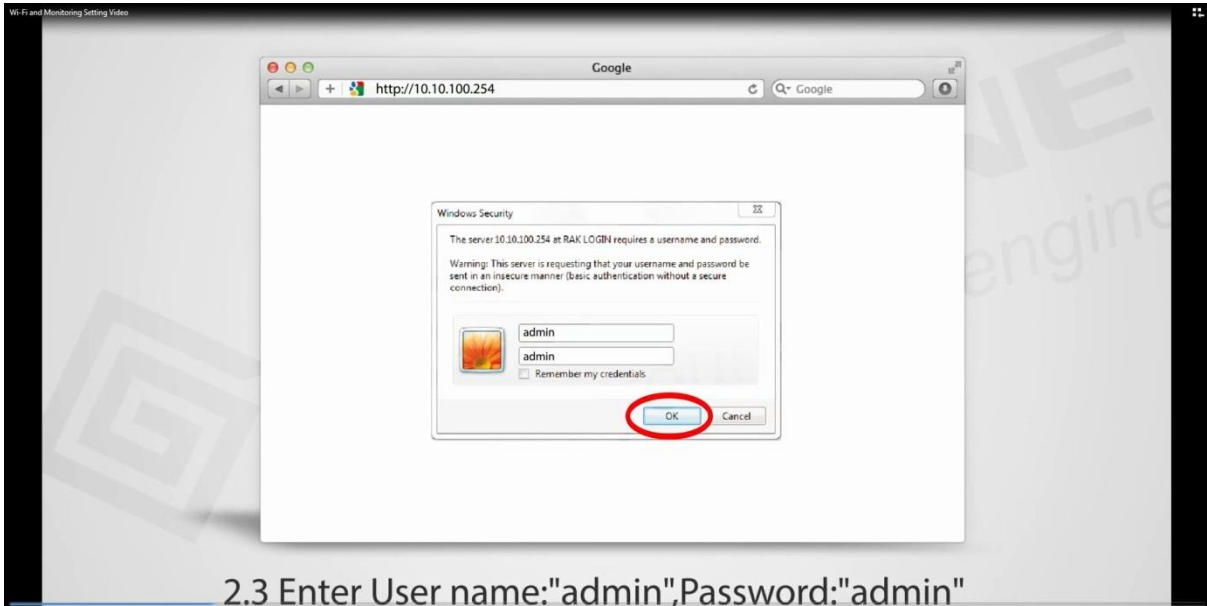


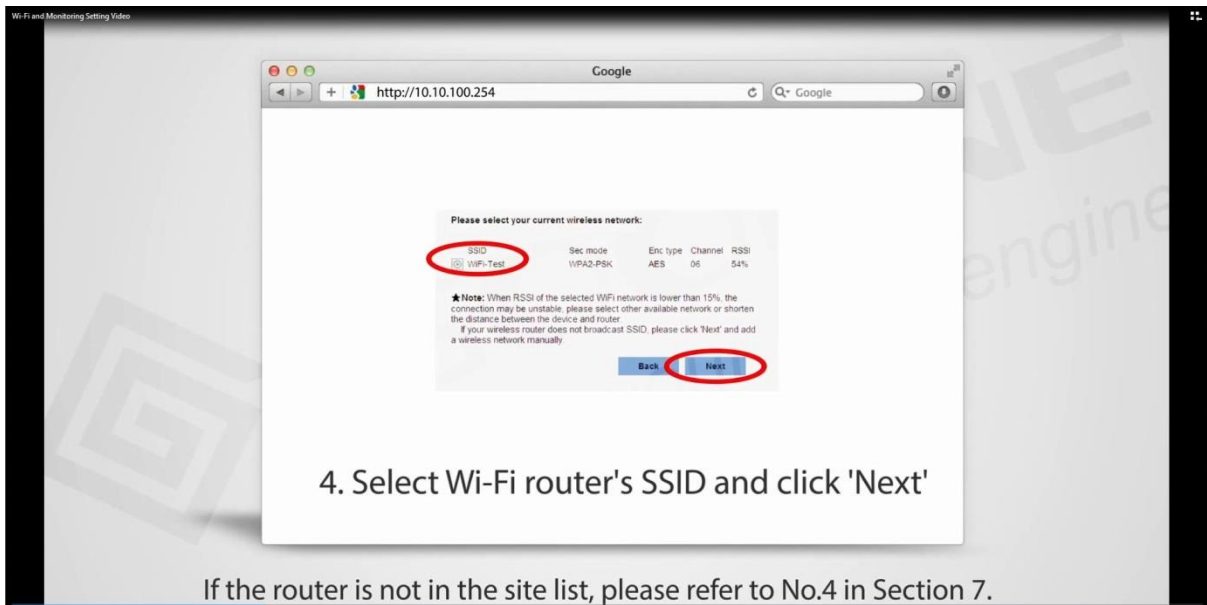
Google



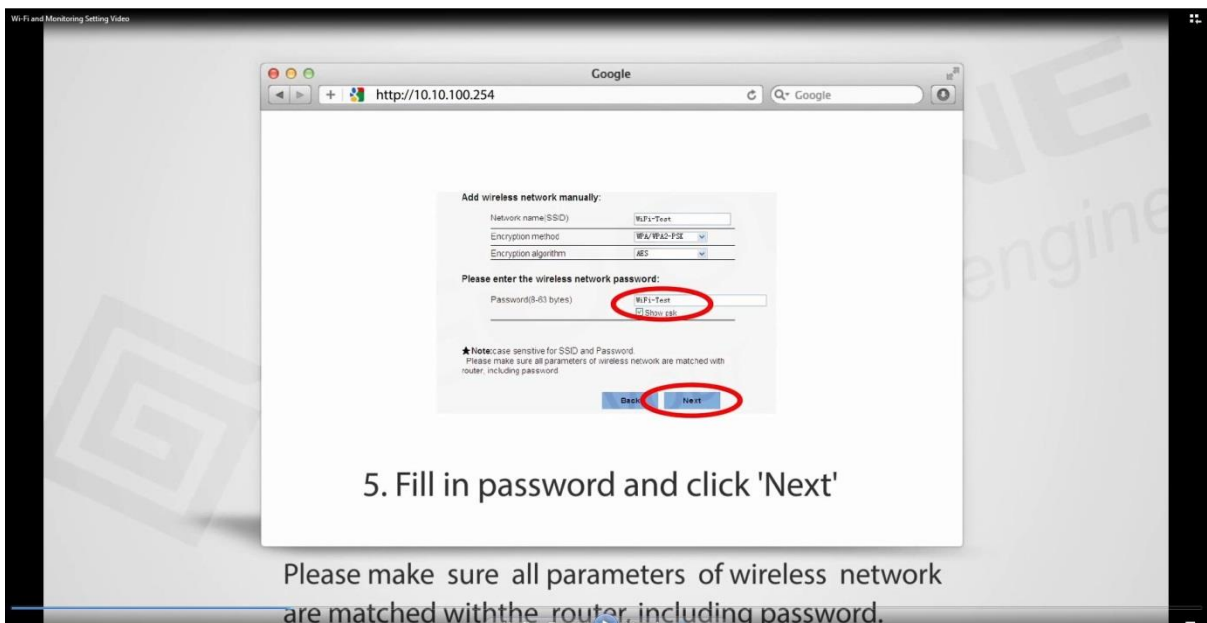
+ |  <http://10.10.100.254>

2.2 Browse website: <http://10.10.100.254>

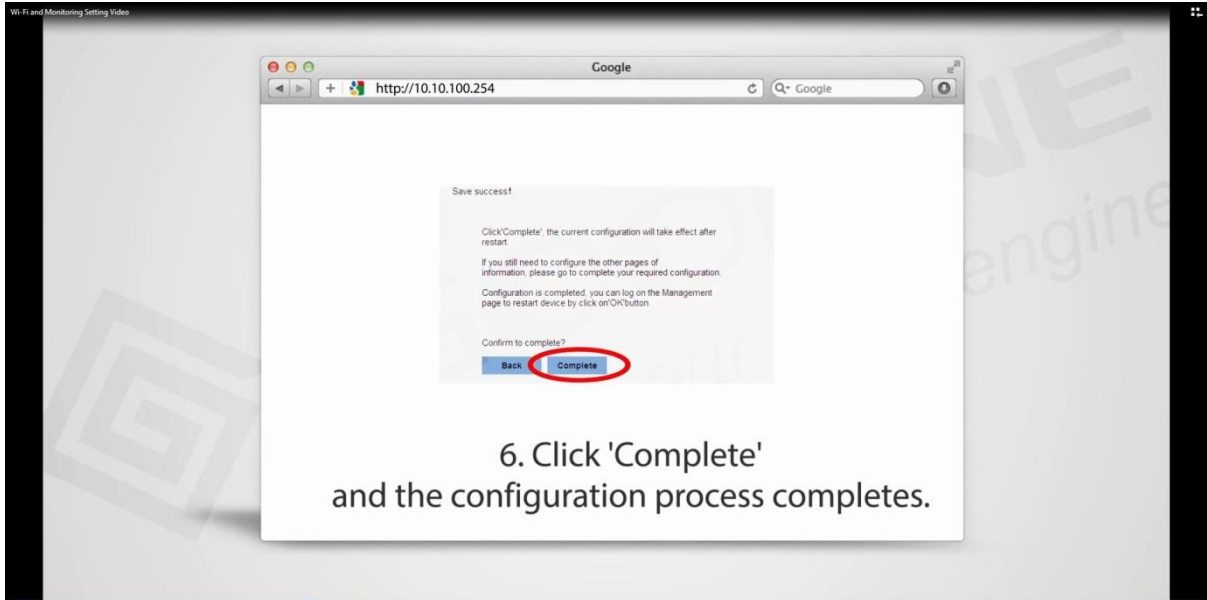




Please Note the **Sec Mode** and **Enc Type** of your Wi-Fi Network.



Please **Make** sure that the **Encryption Method and Algorithm Type** are the same as your Wi-Fi Network.



Once connected to the Goodwe Server the Yellow LED will not be flashing but will be solid on.

## 7. Troubleshooting

No.	Phenomenon	Countermeasures
1	Cannot find Wi-Fi signal of Solar-WiFi	1. Make sure inverter is power on and antenna is installed; 2. Move closer to inverter; 3. Check the protocol of inverter that was preset before is correct or not. It should be 'WiFi' or '.VS. WebServer' for single phase model and 'Set Local' for three phase model; If not, modify it; 4. Restart inverter; 5. Do 'WiFi Reload' operation via button on the front cover of inverter.
2	Cannot connect to Solar-WiFi	1. Try password '12345678'; 2. Restart inverter; 3. Do 'WiFi Reload' operation, and try password '12345678' again.
3	Cannot login webpage of Solar-WiFi	1. Try admin/admin as username and password; 2. Do 'WiFi Reload' operation, and try admin/admin again; 3. Repeat step2 again.
4	Cannot find the SSID of Wi-Fi router in site list	1. Move Wi-Fi router closer to inverter or use a Wi-Fi repeater device, restart Wi-Fi in 'Management' page; 2. Connect to Wi-Fi router and login the setting webpage to check the channel it uses. Please make sure the channel is not bigger than 13. Otherwise, modify it.
5	After configuration, the yellow led keeps 0.5sec on and 0.5sec off	1. Restart inverter; 2. Connect to Solar-WiFi and login again, check the 'SSID', 'Security Mode', 'Encryption Type' and 'Pass Phrase' is matching with that of Wi-Fi router or not; 3. Connect to Wi-Fi router and login to check if the connection reaches the maximum amount or not, and to check the channel of it uses. Please make sure the channel is not bigger than 13. Otherwise, modify it; 4. Restart Wi-Fi router; 5. Move Wi-Fi router closer to inverter or use a Wi-Fi repeater device.
6	After configuration, the yellow led keeps 2.5sec on and 2.5sec off.	1. Connect to the Wi-Fi router and visit the portal. Check the portal is available or not; 2. Restart Wi-Fi router and inverter;
7	After configuration, the yellow led is on all the time, but the status of PV station on portal is still offline.	Check the protocol of inverter that was preset before is correct or not. It should be 'WiFi' or '.VS. WebServer' for single phase model and 'Set Local' for three phase model.