

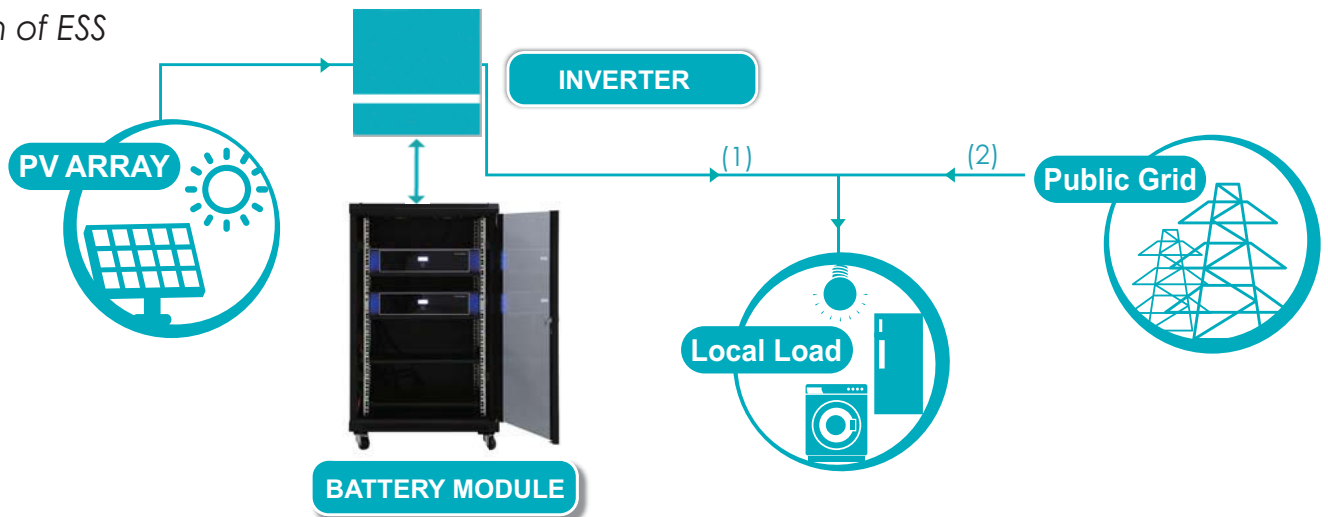


LOW VOLTAGE ENERGY STORAGE SYSTEM -FOR RESIDENTIAL AND SME

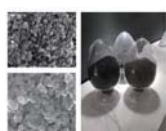


PYLONTECH

Solution of ESS



Vertical industry integration chain



Material

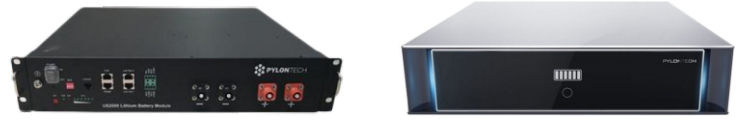


Cell



Battery Module





Specification	Basic Parameters	US2000B Plus	Phantom-S
Nominal	Nominal Volatage (V)	48	48
	Nominal Capacity (Wh)	2400	2400
	Usable Capacity (Wh)	2200	2200
Physical	Dimension (mm)	440 x 410 x 89	445 x 428 x 97.5
	Weight (Kg)	24	24
Electrical	Discharge Voltage (V)	45 ~54	45 ~ 54
	Charge Voltage (V)	52.5 ~ 54	52.5 ~ 54
	Charge / Discharge Current (A)	25 (Recommended)	25 (Recommended)
		50 (Max)	50 (Max)
	100 (Peak @ 15s)	100 (Peak @ 15s)	
Others	Communication Port	RS 232, RS 285, CAN	RS 232, RS 845, CAN
	Working Temp (deg C)	0~50	0~50
	Shelf Temp (deg C)	-20~60	-20~60
	Authentication Level	TUV / CE / UN38.3	TUV / CE / UN38.3
	Design Life	10+ Years (25 deg C)	10+ Years (25 deg C)
	Cycle Life	>4500 (25 deg C)	>4500 (25 deg C)

Advantages

- Vertical industry integration ensures more than 4500 cycles with 90% DoD
- Compact and fashionable design fits in your sweet home environment
- Deliver up to 5KW with single module (2.4KWh)
- Modular design gives the end customers the power of choice of capacity
- Compatible with most of the available Hybrid inverters
- Simple buckle fixing minimize the installation time and cost
- Safety Cert.TÜV CE UN38.3

